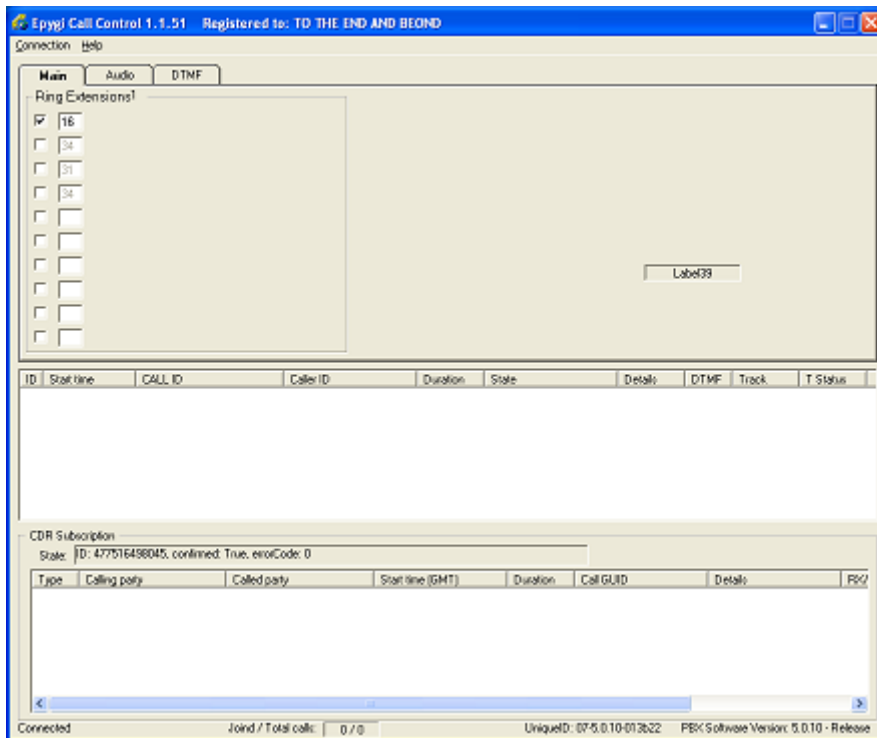


# POS Scales “Epygi Call Control Software”

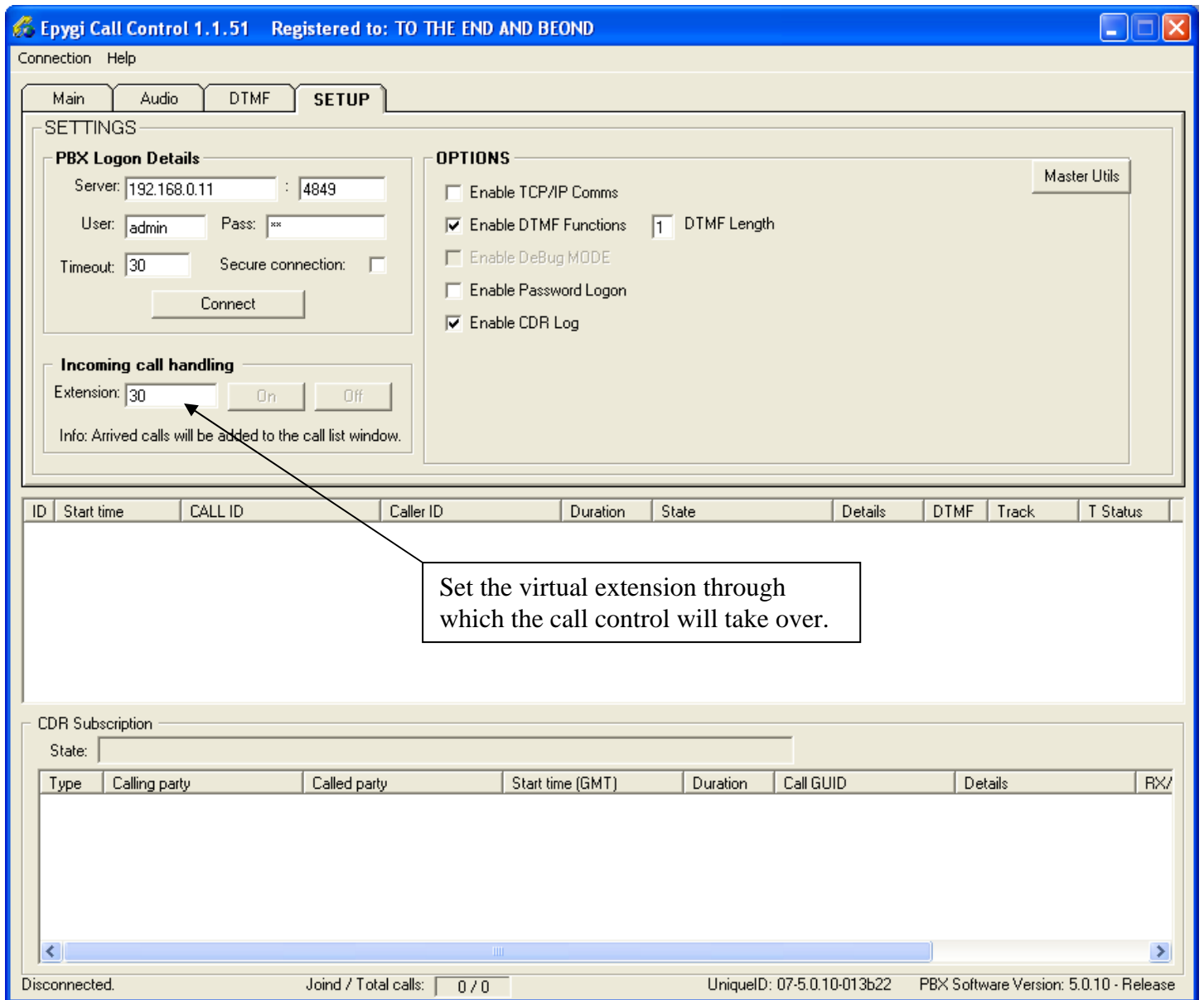
## Basic Overview



Software is located on the taskbar, Right click or dbl click.

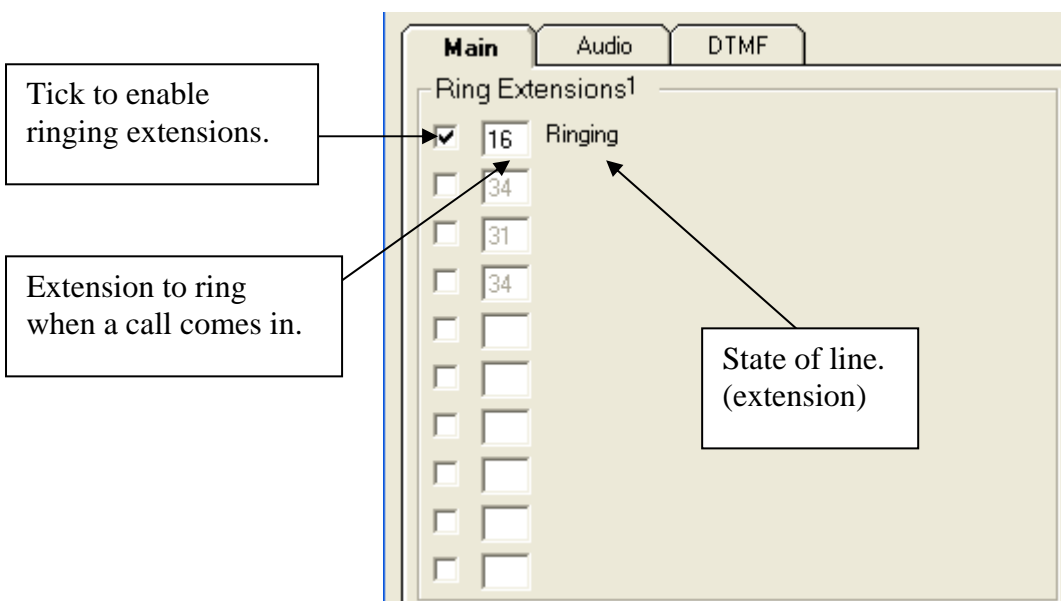


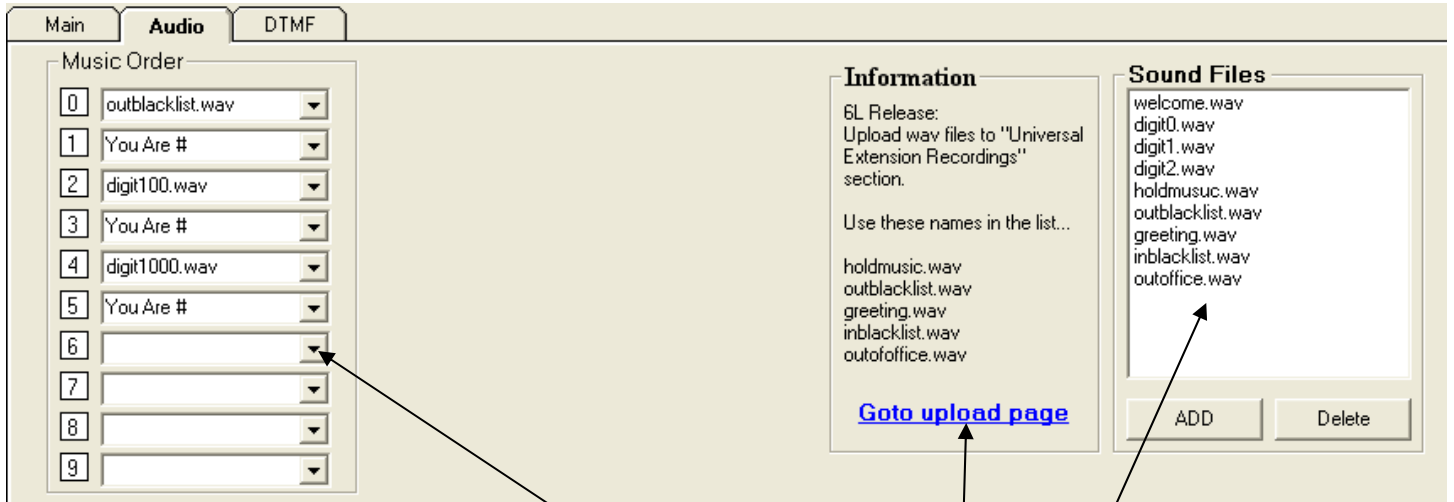
Main Screen



Set the virtual extension through which the call control will take over.

If connected go to connection menu and disconnect  
When the setting are correct click connect.





Order and track that will be played to the caller.

File Bucket or files available to be played in the playlist.

Quick Link to upload wav files in to the PBX.

For More Support please call POS Scales & Surveillance Pty Ltd

1300 130 922

Thank You  
Jason Loeken