



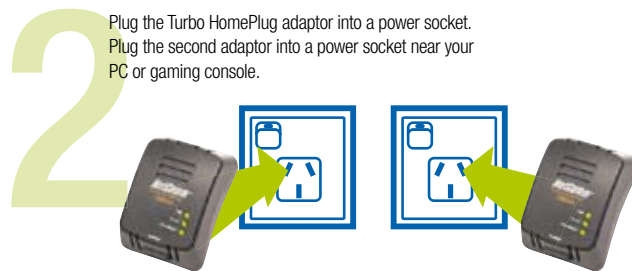
- Ⓞ Turbo Data Rates of up to 85Mbps
- Ⓞ No new wires, no drilling, no hassle, no mess!
- Ⓞ Range of up to 200 metres (point to point) – thick concrete walls or multi-storeyed houses are no longer an issue
- Ⓞ Extend or create an Ethernet network using existing household powerpoints
- Ⓞ A great way to connect gaming consoles to the Internet
- Ⓞ No more wireless networking headaches
- Ⓞ Backwards compatible with 14Mbps HomePlug

### Install an Ethernet network in three easy steps:

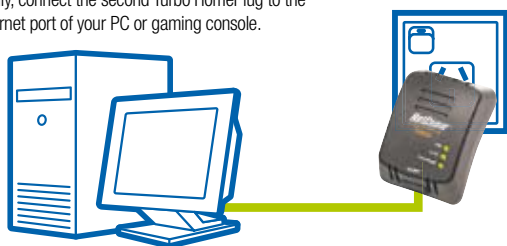
**1** Connect one NP285 HomePlug adaptor to an ADSL or Cable Modem using a supplied Ethernet cable.



**2** Plug the Turbo HomePlug adaptor into a power socket. Plug the second adaptor into a power socket near your PC or gaming console.



**3** Finally, connect the second Turbo HomePlug to the Ethernet port of your PC or gaming console.



With Turbo HomePlug, you can access the Internet in any room with a power socket!

# NP285 Turbo HomePlug Ethernet

## Ethernet Over Power Starter Kit – TWIN PACK

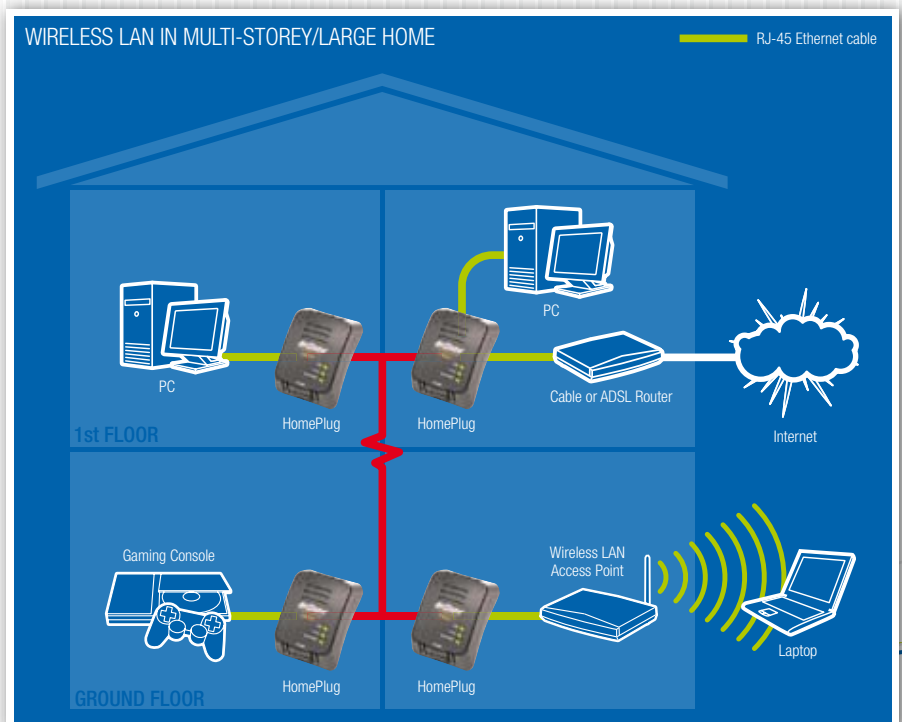
### Instant networking with NetComm's NP285 Turbo HomePlug

Turbo HomePlug transforms your in-house power circuit into an Instant Ethernet Network without the need to install new cables or drill holes through walls and floors. You can connect up to 15 devices to your Turbo HomePlug "network", including PCs, laptops, gaming consoles and ADSL Modem/Routers. With a data carrier rate of 85Mbps and a range of 200 metres, Turbo HomePlug is an ideal way to extend your network access to any room or any floor in your house or office. Turbo HomePlug is also secure, using its DESpro encryption to keep your data secure from eavesdroppers.

#### 3-YEAR WARRANTY WHEN YOU REGISTER ONLINE

1 year warranty out of the box. Extra 2 years FREE with online registration at [www.netcomm.com.au](http://www.netcomm.com.au)

(Conditional upon online registration)



## TECHNICAL SPECIFICATIONS

### PROTOCOL/STANDARDS

- HomePlug 1.0 specification, IEEE 802.3 10/100 Ethernet (10 Mbps) and IEEE 802.3u Fast Ethernet Compliant (100 Mbps)
- Integrated Physical Layer (PHY) and Media Access Controller (MAC)
- 10/100 Mbps AutoMDI/MDIX support
- 85 Mbps HomePlug 1.0 compatible

### MODULATION SUPPORT

- OFDM 256/64/16, DQPSK, DBPSK and ROBO Modulation Scheme

### QUALITY OF SERVICE

- Forward Error Correction (FEC) support
- Channel Adaptation ensures that signal integrity is maintained even under harsh noise environment
- CSMA/CA with prioritisation and Automatic Repeat Request (ARQ) for reliable delivery of Ethernet packets via Packet Encapsulation
- Four Level prioritised random access method
- Segment bursting and contention-free access ensures high throughput while maintaining low latency response and jitter performance

### FREQUENCY BAND

- 4.3MHz ~ 20.9MHz

### SECURITY SUPPORT

- 56-bit DES Encryption with key management for secure powerline communications (Use Windows platform to enable encryption)

### PLATFORM SUPPORT

- Windows 98SE, ME, 2000 or XP
- OS Independent with TCP/IP protocol installed

### POWER SUPPLY

- Switch Mode 90V ~ 240V

### LED INDICATORS

- 1 x Power LED
- 1 x Powerline Activity Status LED
- 1 x Ethernet Link/Activity Status LED

### EXTERNAL CONNECTORS

- 1 x Electrical Power plugs
- 1 x RJ45 for 10/100 Ethernet (AutoMDI/MDI-X)

### ENVIRONMENTAL CONDITIONS

- Operating Temperature 0 ~ 50°Celsius
- Relative Humidity 5 ~ 90% (non-condensing)

### APPROVALS

- C-Tick

### MINIMUM SYSTEM REQUIREMENTS:

- Windows Operating Systems: Microsoft Windows (98se, ME 2000 or XP PC system) with Ethernet connection, Pentium II 300 MHz MMX-Compatible PC or greater, minimum 64MB hard disk space and memory, CD-ROM drive
- Maximum of 15 devices connected to power line network
- All Turbo HomePlugs must be on the same power circuit

### PACKAGE CONTENTS

- 2 x NP285 Turbo HomePlug Adaptors
- 2 x RJ45 10/100 Ethernet cables
- 1 x Configuration/Manual CD
- 1 x Quick Start Guide - on CD

### THREE YEAR WARRANTY\*

One year warranty out of the box. Extra two years free with online registration at [www.netcomm.com.au](http://www.netcomm.com.au)

\*Conditional upon online registration

Your NetComm dealer:

**NetComm**<sup>®</sup>  
Broadband Solutions

SHARE THE EXPERIENCE

NETCOMM LIMITED ABN 85 002 490 486 PO Box 1200, Lane Cove NSW 2066 Australia  
P: 02 9424 2070 F: 02 9424 2010 E: sales@netcomm.com.au W: www.netcomm.com.au

Trademarks and registered trademarks are the property of NetComm Limited or their respective owners. Specifications are subject to change without notice. Images shown may vary slightly from the actual product.